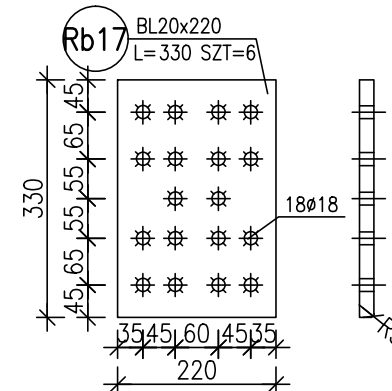
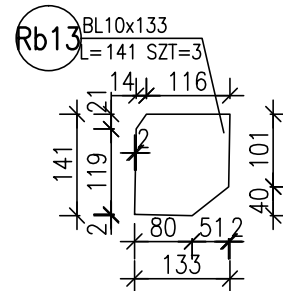
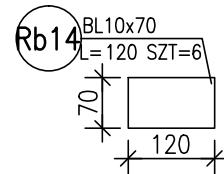
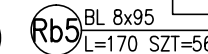
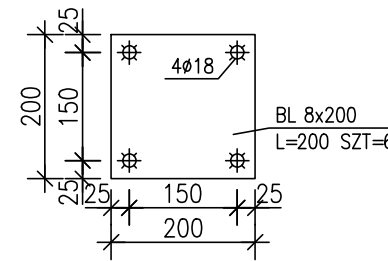
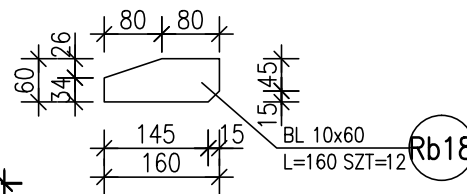
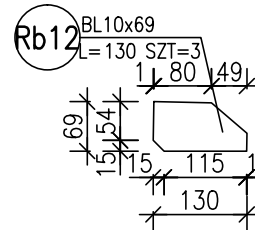
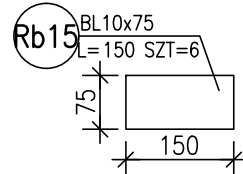
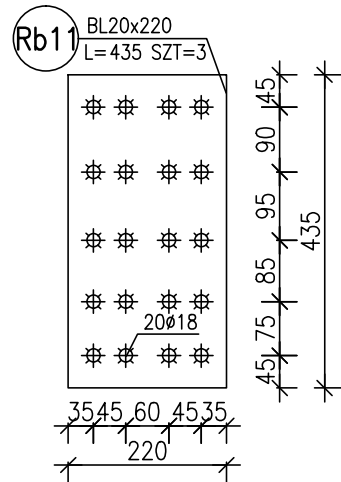
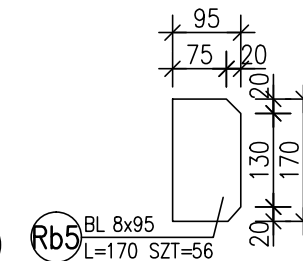
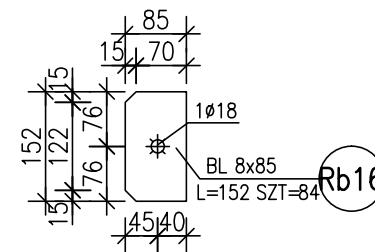
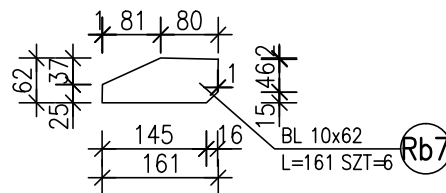
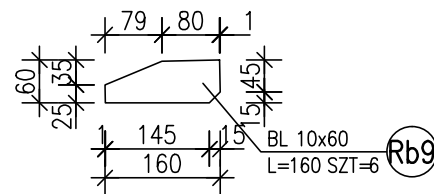
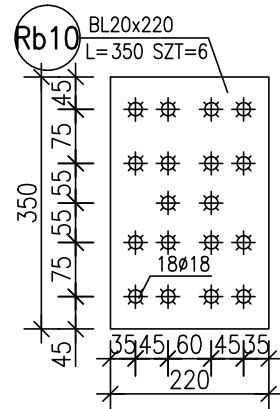
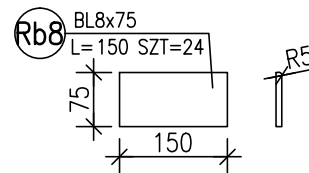
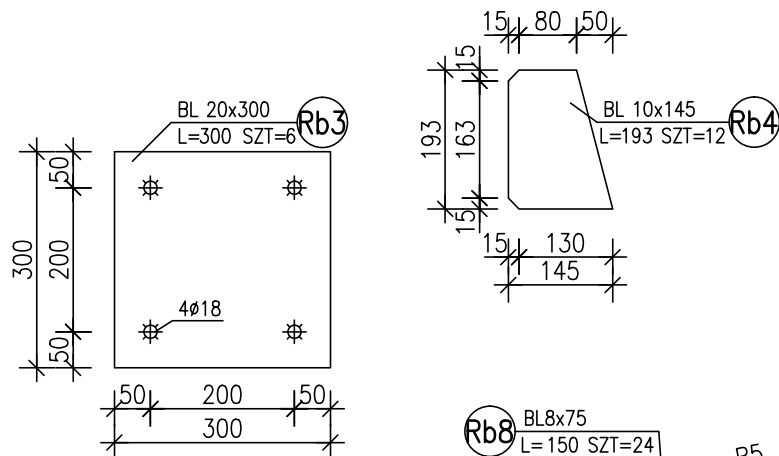
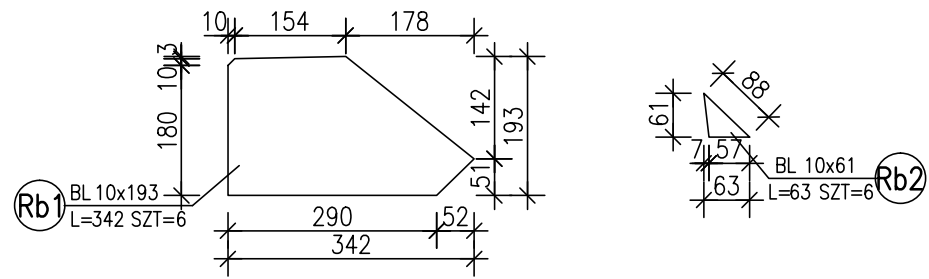


ZESTAWIENIE STALI

POZ.	NUMER ELEMENTU	NAZWA ELEMENTU	DŁUGOŚĆ [mm]	GATUNEK STALI	LICZBA SZTUK	DL. RAZEM [m]	MASA JEDN [kg/m]	MASA RAZEM [kg]	POLE RAZEM [m ²]
A	Rb19	BL 8x200	200	S235JR	6	1.20	12.56	15.07	0.50
R	Rb18	BL 10x60	160	S235JR	12	1.92	4.71	9.04	0.27
R	Rb17	BL 20x220	330	S235JR	6	1.98	34.54	68.39	0.95
R	Rb16	BL 8x85	152	S235JR	84	12.77	5.34	68.16	2.37
R	Rb13	BL 10x133	141	S235JR	3	0.42	10.44	4.42	0.12
R	Rb15	BL 10x75	150	S235JR	6	0.90	5.89	5.30	0.15
R	Rb12	BL 10x69	130	S235JR	3	0.39	5.42	2.11	0.06
R	Rb14	BL 10x70	120	S235JR	6	0.72	5.50	3.96	0.12
R	Rb11	BL 20x220	435	S235JR	3	1.31	34.54	45.07	0.63
R	Rb8	BL 8x75	150	S235JR	24	3.60	4.71	16.96	0.60
R	Rb9	BL 10x60	160	S235JR	6	0.96	4.71	4.52	0.13
R	Rb10	BL 20x220	350	S235JR	6	2.10	34.54	72.53	1.01
R	Rb7	BL 10x62	161	S235JR	6	0.97	4.87	4.70	0.14
R	Rb3	BL 20x300	300	S235JR	6	1.80	47.10	84.78	1.15
R	Rb2	BL 10x61	63	S235JR	6	0.38	4.79	1.81	0.05
R	Rb1	BL 10x193	342	S235JR	6	2.05	15.15	31.09	0.83
R	Rb4	BL 10x145	193	S235JR	12	2.32	11.38	26.36	0.72
R1a	Rb5	BL 8x95	170	S235JR	56	9.52	5.97	56.80	1.96
OGÓLEM								521.07	11.76
NADDATEK NA SPOINY: 1.8%								9.38	0.21
NADDATEK NA NIERÓWNOŚCI: 2%								10.42	0.24
NADDATEK NA ELEM. DODATK.: 1.5%								7.82	0.18
RAZEM:								548.69	12.39
WYKONAĆ: x 1								548.69	12.39



ANEKS 1
RYSUNEK ZAMIENNY

STAL S235

PROJEKTOWANIE I NADZÓR BUDOWLANY "PRO-BUD"		
77-400 ŻŁOTÓW, ul.NORWIDA 7		
TEMAT :	RYGIEL R1/1a- BLACHY	
OBIEKT :	BUDOWA SALI SPORTOWEJ	BRANŻA:
ADRES :	77-400 ŻŁOTÓW, UL. 8-EGO MARCA	KONSTRUKCYJNA
	DZIAŁKA NR 46/5	PROJEKT
INWESTOR :	GMINA MIASTO ŻŁOTÓW	WYKONAWCZY
	Al. Piasta 1	SKALA:
	77-400 ŻŁOTÓW	1:10
PROJ. KONST.:	mgr inż. GRZEGORZ WITKOWICZ	
	UPR. BUD. DO PROJEKTOWANIA BEZ OGRANICZEN W SPECJALNOŚCI KONSTRUKCYJNO-BUDOWLANEJ NR EWID. 7131/120/P/2000	
SPRAW. KONST.:	mgr inż. MAREK TUREK	
	UPR. BUD. DO PROJEKTOWANIA BEZ OGRANICZEN W SPECJALNOŚCI KONSTRUKCYJNO-BUDOWLANEJ NR EWID. WKP/0049/POOK/07	
OPRACOWAŁA:	mgr inż. MONIKA KOWALSKA	
DATA	CZERWIEC 2016r.	NR RYS. A1-KS-2.5